



---

THE ASSOCIATION OF IRISH CALLIGRAPHERS

*Peanndair*

---

Alphabet Project



PEANNAIRÍ ALPHABET PROJECT  
IN LOVING MEMORY OF GRÁINNE CARR



## INTRODUCTION

---

Peannairí exists to give enjoyment and direction to aspiring calligraphers; to cultivate an ancient craft – and also a very modern means of artistic expression, as you will discover when you delve into contemporary work. We organise classes, workshops and occasional exhibitions and offer access to a friendly and helpful community of experienced calligraphers and enthusiastic beginners.

The Alphabet project was born in our room in Drumcondra where Gráinne, Noeleen and I spent seven years teaching, sharing ideas and making plans. It was originally designed as a communal project to give participants a chance to work on vellum and to do some gilding. We had a couple of sessions designing the plaques, mounting vellum on the 16 cm squares and planning an elaborate display case, drawing on Gráinne's architectural skills.

Then Covid intervened, and Gráinne's untimely death devastated us. As a tribute to her, however, we found our way again and here is the finished work, communal, diverse and inclusive. It is dedicated to Gráinne, not just for her work on this project but for her generosity, her goodness and her cheerful sharing of skills, talent and warm encouragement.

**Kevin Honan**

Chairman, Peannairí

March 2025

## PEANNAIRÍ ALPHABET PROJECT – ARTWORK

### Letter A: DONNA DEEKS

**Surface:** Prepared vellum.

**Tools and Materials for piece:** Schminke Calligraphy Gouache: red pearl, madder red, Paris blue, lemon yellow, cadmium yellow light, opaque white. Winsor & Newton Designers Gouache: Van Dyke brown. Finetec: Inca gold and Arabic gold. Red Armenian bole. DaVinci no. 1 and 4/0 Kolinsky brushes.

**Tools and Materials for mounting:** Vellum stretched on 16cm square MDF lined with 180gsm Arches Aquarelle paper.



### Letter B: TOLA FLANAGAN

**Surface:** Arches HP Watercolour 185gsm paper.

**Tools and Materials for piece:** 2B pencil, Gouache, Unipin Fineliner.

**Tools and Materials for mounting:** 5mm Foam board. Fabriano Accademia 120gsm paper for front lining (16mm square, loose) and back cover (15cm square). Scalpel, double sided tape.



### Letter C: RENITA ADE

**Surface:** Canson 185gsm white paper.

**Tools and Materials for piece:** Black fineliner, Faber Castell Polychromos colouring pencils, gold leaf, PVA glue.

**Tools and Materials for mounting:** 5mm foam board, 185gsm Canson paper for front lining (16cm square) and back cover (15cm square). Scalpel, bone folder, PVA glue.

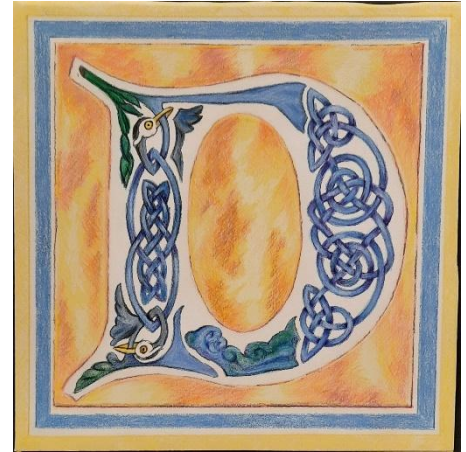


**Letter D: BEBHINN NIC LIAM**

**Surface:** Arches Aquarelle 185gsm paper

**Tools and Materials for piece:** Faber Castell Polychromos & Caran D'Ache Prismalo coloured pencils.

**Tools and Materials for mounting:** 5mm Foam board.  
120gsm cartridge paper for wrapping board. Scalpel, bone folder, 3M spray mount & PVA glue.



**Letter E: SERGIO MOURA**

**Surface:** Watercolour paper 300gsm

**Tools and Materials for piece:** Kölner Aqua Size adhesive, Speedball Simple Metal Leaf (Gold), Schmincke gouache, Winsor & Newton gouache, Acrylic paint, detail brushes.

**Tools and Materials for mounting:** Premier 5mm mounting board, mounting card (backing).



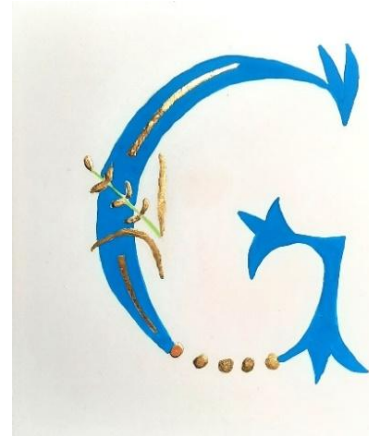
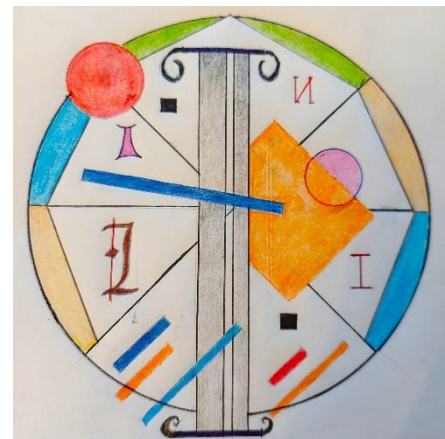
**Letter F: MARIA RODRIGUEZ**

**Surface:** Fabriano Watercolor Hot Press 300gsm paper.

**Tools and Materials for piece:** Faber-Castell Watercolour pencils, Daler Rowney gouache, Copic Multi liner Olive 0.1, Golden Gilding.

**Tools and Materials for mounting:** 5mm hardboard, 16mm square, covered with white 80gsm paper. The painting was mounted on top of the board. Back covered with Fabriano 300gsm paper (approx. 15cm square).



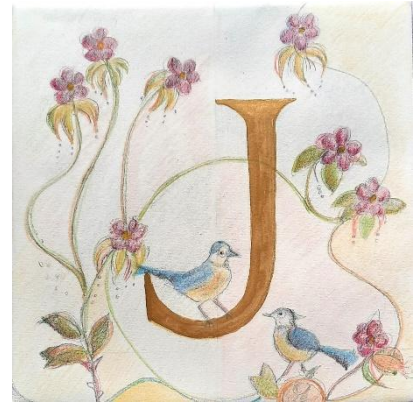
**Letter G: ROISIN WEBB****Surface:** Watercolour Hot Press 300gsm paper**Tools and Materials for piece:** Gouache, gold leaf, gesso.**Tools and Materials for mounting:** MDF board, PVA glue, paper backing, bone folder.**Letter H: NOELEEN FRAIN****Surface:** Arches Aquarelle 300gsm paper.**Tools and Materials for piece:** Winsor & Newton gouache, Finetec Gold, Copic Fineliner sepia pen, Faber Castell Polychromos coloured pencils, paintbrushes, ruling pen, removable tape.**Tools and Materials for mounting:** 5mm Foam board. Fabriano Accademia 120gsm paper for front lining (16mm square, loose) and back cover (15cm square). Scalpel, bone folder, PVA glue.**Letter I: TOM DUNPHY****Surface:** Calfskin vellum**Tools and Materials for piece:** Buntstifte Coloured Pencils, Scribblicious Gel Pens, Scale Ruler, Set Squares, Protractor**Tools and Materials for mounting:** Vellum stretched on 16cm square MDF lined with 180gsm Arches Aquarelle paper.

**Letter J: ANTONIA SCANLAN**

**Surface:** Arches Aquarelle 185gsm paper.

**Tools and Materials for piece:** Finetec Gold watercolour paint. Detail paintbrush size 0, Faber Castell Polychromos and Derwent Coloursoft coloured pencils.

**Tools and Materials for mounting:** Fabriano Accademia 120gsm paper for front lining to 5mm foamboard, bone folder, scalpel, PVA adhesive.

**Letter K: KEVIN HONAN**

**Surface:** Calfskin vellum

**Tools and Materials for piece:** Schmincke gouache, gesso, looseleaf gold.

**Tools and Materials for mounting:** Vellum stretched on 16cm square MDF lined with 180gsm Arches Aquarelle paper.

**Letter L: AURELIE JOUSSET**

**Surface:** Vellum

**Tools and Materials for piece:** Winsor & Newton watercolour paint, Winsor & Newton permanent white gouache, paintbrushes, Kolner Miniatur Ink, gold leaf.

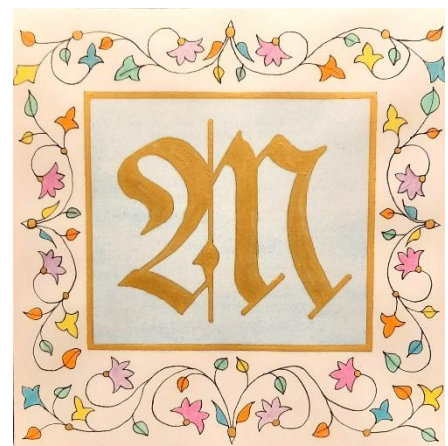
**Tools and Materials for mounting:** Vellum stretched on 16cm square MDF lined with 180gsm Arches Aquarelle paper.

**Letter M: RITA KING**

**Surface:** Arches Aquarelle 185gsm paper.

**Tools and Materials for piece:** Winsor & Newton watercolour paint, Schmincke Gold gouache, Unipin Fineliner pen, Faber Castell Polychromos coloured pencils, paintbrushes, ruling pen, removable tape.

**Tools and Materials for mounting:** 5mm Foam board. Fabriano Accademia 120gsm paper for front lining (16cm square, loose) and back cover (15cm square). Scalpel, double sided tape, bone folder.



**Letter N: JANE CONNELLY**

**Surface:** Arches Aquarelle 185gsm paper.

**Tools and Materials for piece:** Watercolour paints, Gold acrylic paint, fineliner pens, ruling pen, compass, circle stencil.

**Tools and Materials for mounting:** 2mm cardboard, double thickness glued together. Fabriano Designo 120gsm paper as lining and backing paper. Craft knife, double sided tape, bone folder.

**Letter O: SIOBHAN CAMPBELL**

**Surface:** Vellum

**Tools and Materials for piece:** Gilding, Schmincke Calligraphy Gouache, Winsor & Newton Designers Gouache, Cotman brushes sizes 0000 and 0.

**Tools and Materials for mounting:** Vellum stretched on 16cm square MDF lined with 180gsm Arches Aquarelle paper.

**Letter P: NOELEEN FRAIN**

**Surface:** Vellum

**Tools and Materials for piece:** Winsor & Newton Gouache, Golden Heavy Body Acrylic, Copic Fineliner sepia pen, paintbrushes, ruling pen, removable tape.

**Tools and Materials for mounting:** 5mm MDF Board. Fabriano Accademia 120gsm paper for front lining (16cm square, loose) and back cover (15cm square). Scalpel, bone folder, PVA glue.

**Letter Q: MARY McMAHON**

**Surface:** Arches Aquarelle 185gsm paper.

**Tools and Materials for piece:** Winsor & Newton Designers Gouache. Kolner Miniatur, 24c transfer gold leaf. Paintbrushes, glassine paper, burnisher, fountain pen, pointed pen.

**Tools and Materials for mounting:** Greyboard, scalpel, metal ruler, PVA glue.



**Letter R: LILITH SLIWINSKA****Surface:** Vellum**Tools and Materials for piece:** Dr. Ph. Martin's Bombay India Inks, RENESANS Indian Inks, KOH-I-NOOR Drawing Indian Inks, Kölner Miniatur, genuine gold leaf Giusto Manetti 24ct. Paintbrushes: Escoda Perla 1430 5/0, 2/0. Nibs: Tachikawa Maru Nib T-99.**Tools and Materials for mounting:** Medium-density fibreboard, Fabriano Accademia 120gsm paper for front lining (16cm square, loose) and back cover (15cm square), PVA glue.**Letter S: MARY CORLESS****Surface:** Vellum**Tools and Materials for piece:** Winsor & Newton Designers Gouache - permanent white, permanent green middle, primary yellow, lamp black; Daler Rowney Designers' Gouache - spectrum violet; Pigma Micron fineliner pen 0.45 mm - red, green, brown; paintbrushes; removable tape.**Tools and Materials for mounting:** Vellum mounted on board (16cm square). Paper for back cover (15cm square). Scalpel, bone folder, glue.**Letter T: ELIZABETH McARDLE****Surface:** Vellum**Tools and Materials for piece:** Coliro Gold and Silver Pearlcolors, Winsor & Newton gouache (primary red, cerulean blue, permanent yellow deep, sap green), UniPin fineliner pen 0.1, Lyra Graduate coloured pencils, Rowney sable paintbrush, Pro Arte proline plus series 008 paintbrush, steel ruler, low tack tape, HB pencils and Jakar putty eraser.**Tools and Materials for mounting:** MDF board, PVA glue, scalpel, bone folder.**Letter U: MARY HAYES****Surface:** Fabriano watercolour 25% cotton 200gsm cold pressed paper.**Tools and Materials for piece:** 5B pencil to draw letter, Faber-Castell PITT artist pen in purple/pink. Main body of letter painted in Gouache (crimson mixed with white). Flower and leaf colour a mix of Gouache and Caran D'ache watercolour pencil. Leaves painted gold using Finetec Pearl Gold paint. Decorative dots in Gold Leaf.**Tools and Materials for mounting:** 5mm Foam board. Fabriano Accademia 120gsm paper for front lining (16cm square, loose) and back cover (15cm square). Scalpel, bone folder, double sided tape.

**Letter V: GABRIEL HUGHES**

**Surface:** Watercolour paper 300gsm.

**Tools and Materials for piece:** 2H Pencil, Gouache, Paint brushes sizes 00 and 1, masking tape, ruler/straight edge.

**Tools and Materials for mounting:** 5mm Foam board.

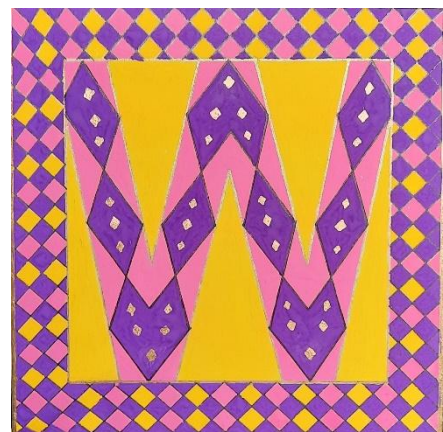
Fabriano Accademia 120gsm paper for front lining (16mm square, loose) and back cover (15cm square). Scalpel, bone folder, PVA glue.

**Letter W: CLODAGH OPDEBEECK**

**Surface:** Vellum

**Tools and Materials for piece:** Graph paper, tracing paper, graphite drawing pencils, Staedtler 0.8 black pigment liner, Edding 780 creative fineliner pen in gold, Schminke gouache paints, Winsor & Newton gouaches, paintbrushes.

**Tools and Materials for mounting:** MDF board, PVA glue, scalpel, bone folder, backing paper.

**Letter X: ANN O'CLERY**

**Surface:** Calfskin Vellum

**Tools and Materials for piece:** Schminke gouache, gesso, looseleaf gold.

**Tools and Materials for mounting:** Vellum stretched on 16cm square MDF lined with 180gsm Arches Aquarelle paper.



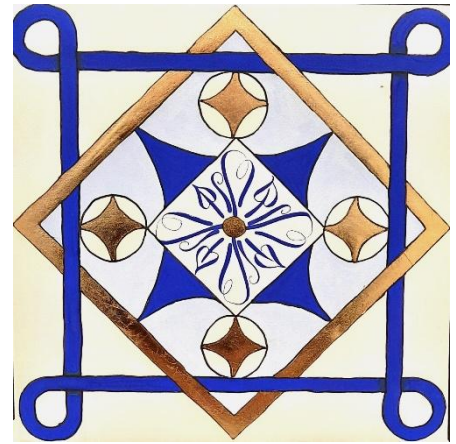
**Letter Y: OONA TULLY****Surface:** Calfskin Vellum**Tools and Materials for piece:** Gesso, Moon Gold 22ct leaf, Pure Gold 24ct leaf, Winsor & Newton gouache, Finetec Moon Gold, Walnut ink, Agate burnisher.**Tools and Materials for mounting:** 6mm MDF board, 200gsm Cartridge paper for front lining (16cm square, loose). Handmade paper for back cover (15cm square). Scalpel, bone folder, PVA glue.**Ampersand: KAREN BUNYAN****Surface:** Arches Aquarelle 185gsm paper.**Tools and Materials for piece:** Winsor & Newton watercolour paint, Winsor & Newton Size 1 and 0 brushes, Copic Fineliner pen in Sepia, Gold Leaf applied with Kölner Miniatur Ink, Van Gough Gold Metallic Watercolour paint for fine detail on leaves.**Tools and Materials for mounting:** 5mm Greyboard (2 X 2.5mm board glued together). Winsor & Newton Cartridge Paper 150gsm paper for front lining the board (16cm square). Paper is mounted to the board with acrylic matt medium.**Letter Z: DAVID STEHLIK****Surface:** Eribo watercolour paper (Afrodita), 200gsm.**Tools and Materials for piece:** 2B graphite pencil for the sketch, Kölner Instacoll System Base and Activator, Manetti 23kt gold leaves, Umtom temperas, Da Vinci brush No.1.**Tools and Materials for mounting:** 16cm square 3mm wooden board, Herkules liquid glue. (Eribo and Umtom are Czech brands).

**Blue Pattern: SUZANNE LITTLE**

**Surface:** Fabriano Acquarello Artistico Hot Press 200gsm paper.

**Tools and Materials for piece:** Pebeo Gede Gilding Paste tinted pink with red watercolour, Imitation Gold Leaf, Winsor & Newton Designers Gouache (ultramarine, permanent white, primary yellow/flame red), Pigma Micron 02 black fineliner, ruler, compass, circle template, Nikko G nib, round brushes size 0 & 3. Pattern from Charles Armstrong (1895) "Cusack's Freehand Ornament", plate 12 on [archive.org](http://archive.org).

**Tools and Materials for mounting:** 3 layers of 2mm grey board glued with Collall Bookbinding Glue. Piece of Fabriano Accademia 120gsm for front lining. Flaps glued with Bookbinding Glue.

**Celtic Knotwork: MARY McMAHON**

**Surface:** Arches Aquarelle 185gsm paper

**Tools and Materials for piece:** Winsor & Newton Designers Gouache, Finetec pearlescent Arabian gold, paintbrushes, pointed pen.

**Tools and Materials for mounting:** Greyboard, scalpel, metal ruler, PVA glue.



## LIST OF PARTICIPANTS

<b>A</b>	<b>DONNA</b> Deeks	<b>B</b>	<b>TOLA</b> Flanagan	<b>C</b>	<b>RENITA</b> Ade
<b>D</b>	<b>BEBHINN</b> Nic Liam	<b>E</b>	<b>SERGIO</b> Moura	<b>F</b>	<b>MARIA</b> Rodriguez
<b>G</b>	<b>ROISIN</b> Webb	<b>H</b>	<b>NOELEN</b> Frain	<b>I</b>	<b>TOM</b> Dunphy
<b>J</b>	<b>ANTONIA</b> Scanlan	<b>K</b>	<b>KEVIN</b> Honan	<b>L</b>	<b>AURELIE</b> Jousset
<b>M</b>	<b>RITA</b> King	<b>N</b>	<b>JANE</b> Connelly	<b>O</b>	<b>SIOBHAN</b> Campbell
<b>P</b>	<b>NOELEN</b> Frain	<b>Q</b>	<b>MARY</b> McMahon	<b>R</b>	<b>LILITH</b> Sliwiska
<b>S</b>	<b>MARY</b> Corless	<b>T</b>	<b>ELIZABETH</b> McArdle	<b>U</b>	<b>MARY</b> Hayes
<b>V</b>	<b>GABRIEL</b> Hughes	<b>W</b>	<b>CLODAGH</b> Opdebeeck	<b>X</b>	<b>ANN</b> O'Clery
<b>Y</b>	<b>OONA</b> Tully	<b>&amp;</b>	<b>KAREN</b> Bunyan	<b>Z</b>	<b>DAVID</b> Stehlik
<b>Blue Design</b>	<b>SUZANNE</b> Little	<b>Celtic Knotwork</b>	<b>MARY</b> McMahon		
<b>Initial Concept</b>	<b>GRÁINNE CARR</b>	<b>Project Director</b>	<b>KEVIN HONAN</b>	<b>Tuition</b>	<b>KEVIN HONAN</b> <b>NOELEN FRAIN</b> <b>JAN MEHIGAN</b>